

**ITEM 41. PARKING – NO PARKING - COMMONWEALTH STREET SURRY HILLS**

**TRIM RECORD NO: 2015/635208**

**RECOMMENDATION**

It is recommended that the Committee endorse the reallocation of parking on the eastern side of Commonwealth Street, Surry Hills

- (A) between the points 18.6 metres and 26.8 metres (two car spaces) south of Reservoir Street as “No Parking”.
- (B) between the points 46.2 metres and 51 metres (one car space) south of Reservoir Street as “1P 8am-10pm Mon-Sat Permit Holders Excepted Area 18”.

**DECISION**

**BACKGROUND**

The Developer of 144 Commonwealth Street, Surry Hills has requested the extension of the adjoining 1 hour permit parking restriction across the former driveway of the property and provision of “No Parking” across the new driveway of the property.

**COMMENTS**

Property 144 Commonwealth Street, Surry Hills has a driveway on Commonwealth Street which is currently signposted as “No Parking”.

The City has approved the redevelopment of the site and a Condition of Development Consent requires the removal of the driveway and the adjustment to the parking restrictions in front of the development.

It is proposed to reallocate the “No Parking” zone across the former driveway to “1P 8am-10pm Mon-Sat Permit Holders Excepted Area 18” which would result in an increase of one parking space for residents and visitors to the area.

The existing Loading Zone in front of the property is used by the nearby businesses and therefore will be retained except that a “No Parking” restriction would be provided across the new driveway of the property.

**CONSULTATION**

The City did not consult local residents in the area as this change is required as part of the development consent.

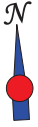
**FINANCIAL**

All costs associated with the proposed work will be borne by the Applicant.

**ATTACHMENTS**

Parking – No Parking - Commonwealth Street Surry Hills

Joseph Gomes, Area Traffic Engineering



# GROWTHBUILT

Location -

144 Commonwealth St, Surry Hills

RESERVOIR ST

0.0m

14.1m

18.6m

26.8m

46.2m

51.0m

COMMONWEALTH ST

ANN ST

